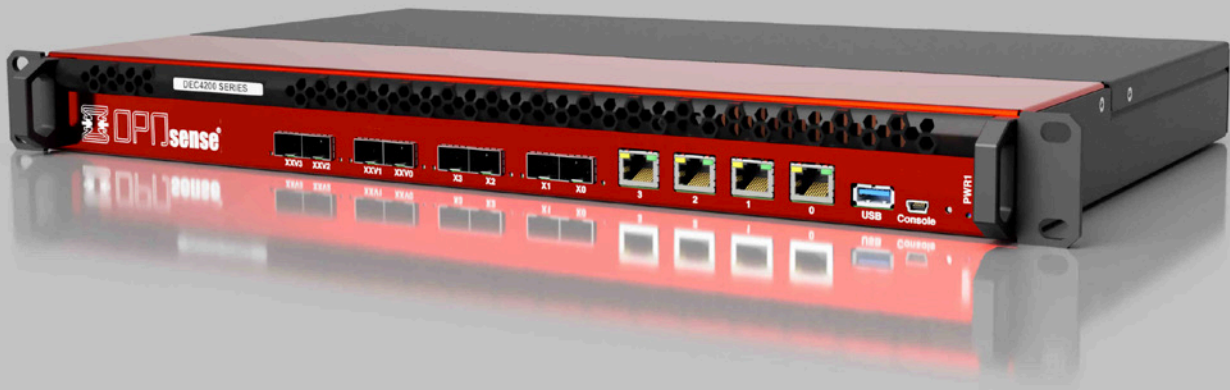


# DEC4200 Series

Rack Security Appliance  
Enterprise & datacenter Edition



(c) 2023 Deciso B.V., All Rights Reserved. [rev.04072023]

## Simply the best

Rack mountable appliance, the full package at an affordable price. Exceptional performance for datacenters & enterprises.



**60Gbps Throughput**  
**5 Mega Packets per Second**



**Guard Web Access Filtering (SSL) Proxy**  
**Captive Portal with Voucher support**



**~7.5Gbps**  
**Inline Intrusion Prevention**



**1 TB SSD Offering Sufficient Space for**  
**Logging & Reporting**



**Fast Filtering**  
**Up to 50.000 Connections per Second**



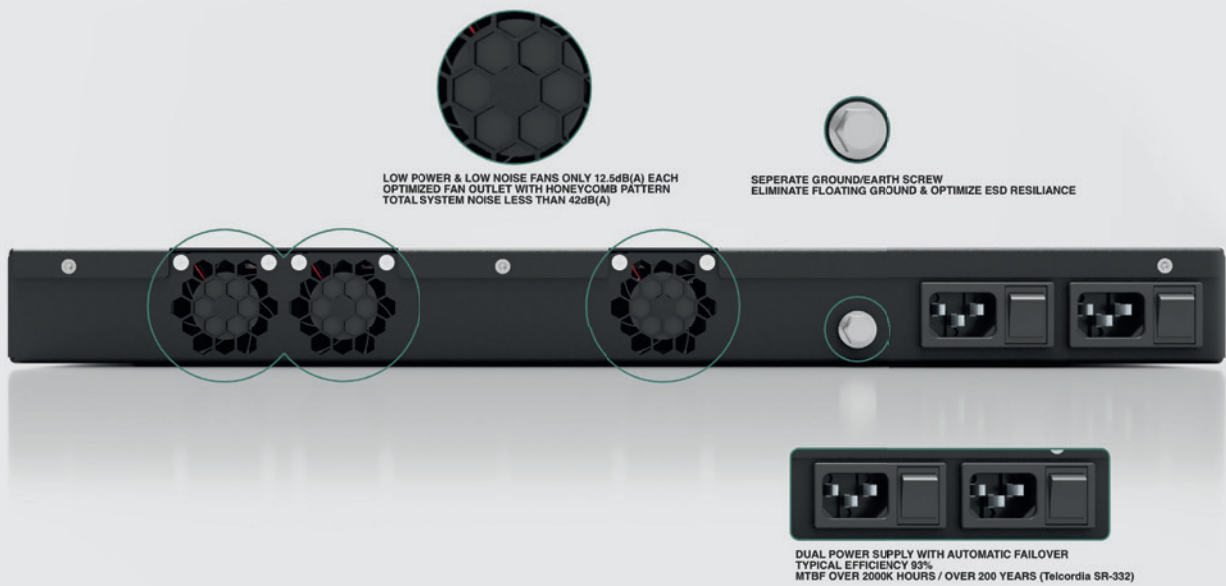
**System wide two-factor authentication.**  
**Compatible with Google Authenticator.**



**Hardware Assisted Encryption**  
**2.5Gbps IPsec (AES256GCM16)**



**Dual Power Supply**  
**Integrated non-interrupted automatic failover**



### Dual power supply

Integrated non-interrupted automatic failover. High quality 93% Efficient Power Supplies with MTBF of 2472K hrs Telcordia TR/SR-332(Bellcore) (that is over 200 years!).

### Sufficient storage & RAM

One terabyte of integrated storage for logging and advanced features. Sufficient memory for most demanding features and plugins like Zenarmor (for 2000+ connected devices)

### Powerfull dual die 16 core SOC\*

The fastest EPYC 3000 cpu available for the most demanding Network loads.

\*Maximum specification / DEC4280

### Network connectivity

A maximum of twelve network ports. Connect the way you want: four SFP28 ports (25Gbps) DEC4280 only, four SFP+ ports (10Gbps) and four RJ45 Ethernet ports (2.5 Gbps)

### Low noise cooling

The DEC4200 Series comes with a new cooling design that utilises low noise fans with specially designed heatsinks and air-ducts. Not only does this lower the produced noise to a level below 42dB(A), it also minimises overall power consumption.

DEC4200 Series

## Certified hardware from the developers

Made in the Netherlands



## Bundled with a free year OPNsense® Business Edition

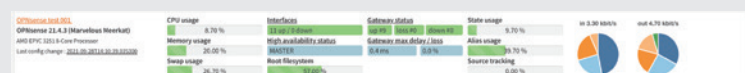
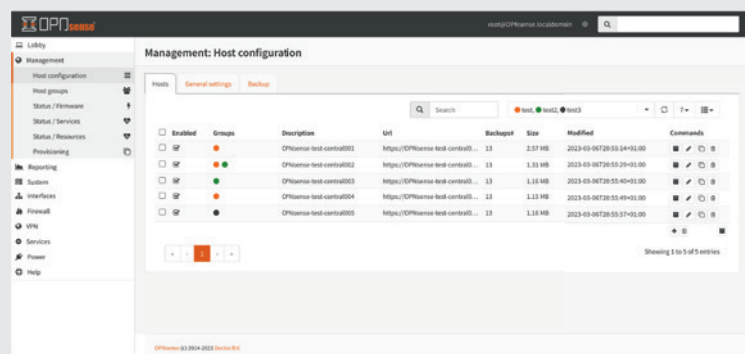
A 5-star experience

- \* Commercial firmware repository
- \* Official OPNsense Open Virtualisation Image
- \* Integrated GeolIP database
- \* Free E-Book (English & German)
- \* Free professional plugins:
  - Web Application Firewall
  - Proxy Access
  - Extended Blocklist
  - OPNcentral™

## OPNcentral™

Central Management,  
the OPNsense® way

- Provisioning
- Multi tenancy using host groups
- Centralised Backups
- Centralised Firmware Upgrades
- Monitoring:
  - Machine state
  - Firmware version
  - Resources



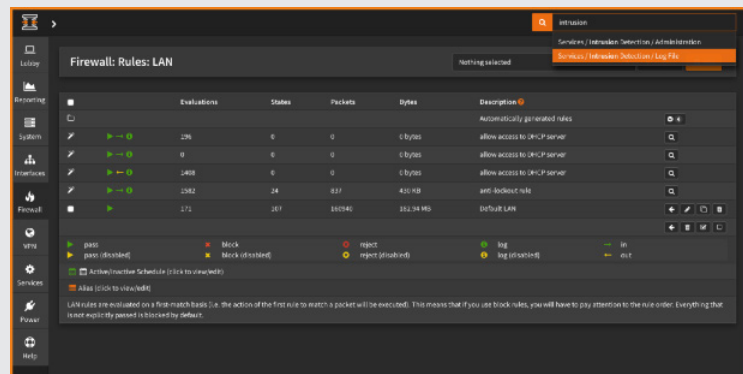
DEC4200 Series

## Software

# Versatile, open source and fully featured

OPNsense is Deciso's fast growing open source firewall and security platform released under an Open Source Initiative approved license. Its rich feature set is combined with the benefits of open and verifiable sources.

All features can be used from within the easy to use graphical interface, equipped with a build-in search feature for quick navigation. Protecting your network has never been this easy with features such as; the integrated intrusion prevention system and two-factor authentication for safely connecting mobile users.



## Businesses

Protect your business network and secure your connections. From the stateful inspection firewall to the inline intrusion detection & prevention system everything is included for free. Use the traffic shaper to enhance network performance.

## Schools

Limit and share available bandwidth evenly amongst students and utilise the category based web filtering to filter unwanted traffic such as adult content and malicious websites. It is easy to setup as no additional plugins nor packages are required.

## Hotels

OPNsense offers a captive portal to control guest internet access for a limited duration. Vouchers can easily be created via the graphical user interface.

## On the road

Even on the road OPNsense is a great asset to your business as it offers OpenVPN and IPSec VPN solution with road warrior support and two-factor authentication. The easy client exporter make configuring your OpenVPN SSL client setup a breeze.

## Remote Offices / Branches & SOHO

The integrated site to site VPN (IPsec or SSL VPN) can be used to create a secure network connection to and from your remote offices. Enjoy the easy configuration and online searchable documentation with simple how-to type of articles to get you started, quickly. Pluggable support is offered for ZeroTier, Tinc as well as Wireguard.

# Overview software features

## Stateful firewall

- Filter by
  - Source
  - Destination
  - Protocol
  - Port
  - OS (OSFP)
- Limit simultaneous connections on a per rule base
- Log matching traffic on a per rule bases
- Policy Based Routing
- Packet Normalisation
- Option to disable filter for pure router mode

## Policy organization

- Alias Support
  - IP addresses
  - Port ranges
  - Domain names (FQDN)
- Interface Groups
  - Create security zones with equal rules
- Rule Category
  - Easy access rule sets

## Granular control state table

- Adjustable state table size
- On a per rule bases
  - Limit simultaneous client connection
  - Limit states per host
  - Limit new connections per second
  - Define state timeout
  - Define state type
- State types
  - Keep
  - Sloppy
  - Modulate
  - Synproxy
  - None
- Optimisation options
  - Normal
  - High latency
  - Aggressive
  - Conservative

## Authentication

- External Servers
  - LDAP
  - Radius
- Integrated Servers
  - Local User Manager
  - Vouchers / Tickets
  - FreeRadius (Plugin)

## Authorization

- User Interface
  - Local User Manager

## Accounting

- FreeRadius (Plugin & External)
- Vouchers / Tickets

## 2-Factor Authentication

- Supports TOTP
- Google Authenticator
- Supported services:
  - Captive Portal
  - Proxy
  - VPN
  - GUI
  - SSH / Console

## Certificates

- Certificate Authority
  - Create or Import CA's
  - Create or Import Certificates
- Let's Encrypt (Plugin)

- Automated (Trusted) CA

## 802.1Q VLAN support

- Max 4096 VLAN's

## Link Aggregation & Failover

- Failover
- Load Balance
- Round Robin
- Cisco Ether Channel (FEC)
- 802.3ad LACP

## Other interface types

- Bridged interfaces
- Generic Tunnel Interface (GIF)
- Generic Routing Encapsulation

## Network Address Translation

- Port forwarding
- 1:1 of ip's & subnets
- Outbound NAT
- NAT Reflection

## Traffic Shaping

- Limit bandwidth
- Share bandwidth
- Prioritize traffic
- Rule based matching
  - Protocol
  - Source
  - Destination
  - Port
  - Direction

## IGMP Proxy

- For multicast routing

## Universal Plug & Play

- Fully supported

## Dynamic DNS

- Selectable form a list
- Custom
- RFC 2136 support

## DNS Forwarder

- Host Overrides
- Domain Overrides
- DNS Server
- Host Overrides
  - A records
  - MX records
- Access Lists

## DNS Filter

- Supports OpenDNS

## DHCP Server

- IPv4 & IPv6
- Relay Support
- BOOTP options

## Multi WAN

- Load balancing
- Failover
- Aliases

## Load Balancer

- Balance incoming traffic over multiple servers

## Network Time Server

- Hardware devices
  - GPS
  - Pulse Per Second

## Intrusion Detection & Prevention

- Inline Prevention
- Integrated rulesets
  - SSL Blacklists

- Feodo Tracker
- Emerging Threats ETOpen
- SSL Fingerprinting
- Auto rule update using configurable cron

## Captive Portal

- Typical Applications
  - Guest Network
  - Bring Your Own Device (BYOD)
  - Hotel & Camping Wifi Access
  - Template Management
  - Multiple Zones
- Authenticators
  - All available authenticators
  - None (Splash Screen Only)
- Voucher Manager
  - Multiple Voucher Databases
  - Export vouchers to CSV
- Timeouts & Welcome Back
- Bandwidth Management
  - Use Traffic Shaper
- Portal bypass
  - MAC and IP whitelisting
- Real Time Reporting
  - Live top IP bandwidth usage
  - Active Sessions
  - Time left
  - Rest API

## Virtual Private Networks

- IPsec
  - Site to Site
  - Road Warrior
- WireGuard (Plugin)
  - Site to Site
  - Road Warrior
- OpenVPN
  - Site to Site
  - Road Warrior
  - Easy client configuration exporter
- Tinc (Plugin)
  - Full mesh routing
- ZeroTier (Plugin)
  - VPN, SDN & SD-WAN

## High Availability

- Automatic hardware failover
- Synchronized state table
- Configuration synchronisation

## Caching Proxy

- Multi interface
- Transparent Mode
- Support SSL Bump
- SSL Domain only (easy filtering)
- Access Control Lists
- Blacklists
- Category Based Web-filter
- Traffic Management
- Auto sync for remote blacklists
- ICAP (supports virus scan engine)

## Virus scanning (via plugins)

- External engine support (ICAP)
- ClamAV (Plugin / C-ICAP)

## Reverse Proxy

- HAProxy - Load balancer (Plugin)

## Online Identity Protection

- Tor - Anonymity online (Plugin)

## Backup & Restore

- History & Diff support
- File Backup

- Cloud Backup
- Git Backup

## SNMP

- Monitor & Traps

## Diagnostics

- Filter reload status
- Firewall Info (pfInfo)
- Top Users (pfTop)
- Firewall Tables
  - Aliases
  - Bogons
- Current Open Sockets
- Show All States
- State Reset
- State Summary
- Wake on LAN
- ARP Table
- DNS Lookup
- NDP Table
- Ping
- Packet Capture
- Test Port
- Trace route

## Monitoring

- Zabbix Agent (Plugin)
- Monit (Plugin)
  - Proactive System Monitoring

## Enhanced Reporting

- Network Flow Analyzer 'Insight'
  - Fully Integrated
  - Detailed Aggregation
  - Graphical Representation
  - Clickable and Searchable
  - CSV Exporter
- System Health
  - Round Robin Data
  - Selection & Zoom
  - Exportable
- Traffic Graph
  - Live Traffic Monitoring

## Network Monitoring

- Netflow Exporter
  - Version 5 & version 9
  - Local for 'Insight'

## Firmware

- Support Virtual Installs
  - VMware tools (Plugin)
  - Xen Guest Utilities (Plugin)
- Easy Upgrade
  - Reboot warning for base upgrades
- SSL Flavour selectable
  - OpenSSL
  - LibreSSL
- Selectable Package Mirror
- Reinstall Single Package
- Lock Package (prevents upgrade)
- Audit Feature
  - Check installed packages for known security vulnerabilities
- Plugin Support

## REST API

- ACL support

## Online Documentation

- Free & Searchable

For updated information on current release see: [docs.opnsense.org](https://docs.opnsense.org)

# Specifications and model comparison

Models	DEC4240	DEC4280
		
<b>Software</b>		
Preinstalled software	OPNsense®	OPNsense®
License	Open Source + 1 year free Business Edition	Open Source + 1 year free Business Edition
<b>Hardware Specifications</b>		
SFP+ Ports [10Gbps] / SFP28 Ports [25Gbps]	4/0	4/4
GbE RJ45 Ports [ 100/1000/2500Mbps ]	4	4
USB 3.0 Ports	1	1
Console Port	1	1
Internal Storage	1TB M.2. Solid State Flash	1TB M.2. Solid State Flash
Memory	64GB DDR4	64GB DDR4
CPU Cores	8 (max frequency 3.1Ghz)	16 (max frequency 3.1Ghz)
Virtual Interfaces (802.1q VLANS) <sup>1</sup>	4093	4093
<b>System Performance</b>		
Firewall Throughput	21.1Gbps	60Gpbs
Firewall Packets Per Second	1760Kpps	5000Kpps
Firewall Port to Port Throughput	9Gbps	21Gbps
Concurrent Sessions	63000000	63000000
New Connections Per Second	50000	50000
Firewall Latency (average)	100us	100us
Firewall Policies (Recommended Maximum) <sup>1</sup>	10000	10000
IPsec VPN Throughput (AES256GCM16)	2.5Gbps	2.5Gbps
IPsec VPN Packet Per Second (AES256GCM16)	220Kpps	220Kpps
Threat Protection Throughput Packet Per Second	291Kpps	625Kpps
Threat Protection Throughput	~3.5Gpbs	~7.5Gpbs
High Availability with State Synchronisation	Requires Two	Requires Two
<b>Dimensions</b>		
Height x Width x Depth (mm)	43.8 (1U) x 482.6 (19") x 302 (274 excl. mount/handle)	43.8 (1U) x 482.6 (19") x 302 (274 excl. mount/handle)
Height x Width x Length (inches)	1.73 x 19 x 11.9 (10.8 excl. panel)	1.73 x 19 x 11.9 (10.8 excl. panel)
Form Factor	19" Rackmountable	19" Rackmountable
Weight (appliance only)	4.7 kg	4.85 kg
<b>Environment</b>		
Power Requirements	100-240VAC, 50-60Hz	100-240VAC, 50-60Hz
Maximum Current (single PSU)	2.6A	2.6A
Power Consumption (Typical - single PSU)	55W	80W
Heat Dissipation	187.6 BTU/hr	273 BTU/hr
Operating Temperature	0 to +45°C	0 to +45°C
Storage Temperature	-20 to +70°C	-20 to +70°C
Humidity	10-90% non-condensing	10-90% non-condensing
<b>Regulatory Compliance</b>		
	FCC part 15 Class A, CE, Rohs	FCC part 15 Class A, CE, Rohs

<sup>1</sup>) The user interface is designed for normal business usage, large rulesets, high number of users or interface assignments may be less practical.

All measurements are based upon TCP traffic unless stated otherwise. Total Firewall Throughput is calculated based on maximum PPS and standard 1500 byte packets. Maximum PPS is measured using 500 byte packets. IPS performance is measured using ET Open and standard 1500 byte package size (using Suricata version 6.0.12 / Netmap version 14) SSL VPN is measured using AES256GCM16+SHA512. Concurrent sessions are based upon memory available, where one state consumes 1KB of memory and 1GB of memory is reserved for system tasks. Latency is measured as an average over 60 seconds.

DEC4200 Series